
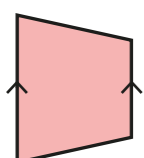
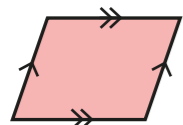
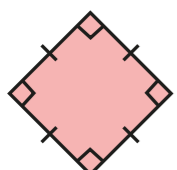
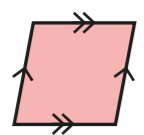
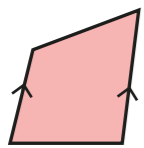


3 Complete the table.

Shape	Polygon?	Number of sides	Number of right angles	Number of pairs of parallel sides	Number of equal sides
	Yes	4	4	2	2 pairs
					2
					
					
					
					

What is the same about all of the shapes?

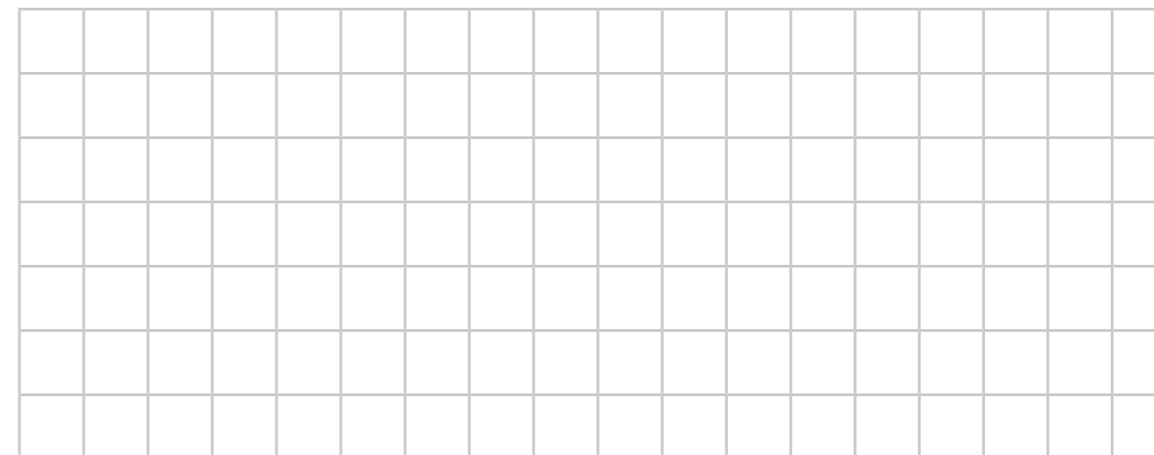
What is different?

4 Draw the shapes on the grid.

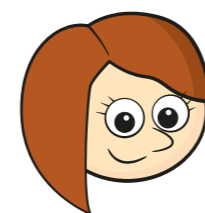
a) square

b) trapezium

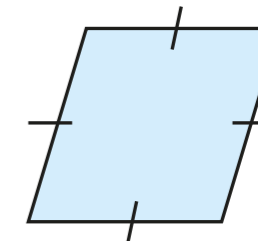
c) parallelogram



5



This is a square because it has got 4 equal sides.



Do you agree with Rosie? \_\_\_\_\_

Explain your answer.

6

Complete this Frayer Model to describe a quadrilateral.

